



FROM TRADITION TO INNOVATION

PRODUCT CATALOG





SUMMARY

EDITORIAL	04
SOFT CHEESES	05
Molds & block-molds	
Rounds	06
Squares	16
Rectangulars	19
Oval's	21
Pyramid's	22
Ingot's	23
Petal's	24
Specialty shapes & embossing	25
Distributors	26
Baguettes draining mats	27
Meshed draining mat	28
Trays	29
Coagulation vats	
Semi cylindrical vats in polyethylene	30
Semi elliptical vats in polyethylene	30
Parallelepipedic vats in polyethylene	31
Semi spherical vats in polyethylene	32
Identification	33
Supports & manutention	34
PRESSED CHEESES	35
Custom manufactured pressing moulds and lids	
Rounds	36
Squares	38
Rectangulars	39
Injection molded cheese moulds and lids	
Rounds	40
Rectangulars	41
Aging	42
Sterilisation plates	43

EDITORIAL

Dear Customers,

Welcome to Servi Doryl's newly designed website. Our hope is to give you better access to our products and services. We also want to give you the best access to our team members who can assist you worldwide. Servi Doryl is innovative and proposes a complete range of products around the cheese form. Feel free to contact us with any needs you have. Happy navigation.

Why you can depend on us:

Since a major shareholder change, and the restructuring of our company in February 2009, Servi Doryl is well positioned for the exclusive development, production and marketing of unique cheese forms for the dairy industry. Servi Doryl carries with it nearly 40 years of fabricating experience backed by professional and scientific research.

World leader in the cheese making equipment market, Servi Doryl is the only company offering worldwide; forms for soft cheeses as well as pressed cheeses. Our international agent networks are trained to follow the evolution and long & short trend patterns of this growing market putting their knowledge and expertise to work on the varied demands of our customers.

Our team is composed of competent men and women sharing your passion for "cheese making". We relentlessly seek the answers needed to solve daily manufacturing problems by focusing on the production of the best quality cheeses. Our team is accessible and readily available to understand, analyze and fulfill your needs.

Soft and hard cheeses are two distinct categories:

We offer coupling forms and patented anti-drop trays for soft cheese making and handling. ...And for hard cheeses –we have replaced cheese cloth –entirely, with a perfectly effective variety of dynamic texture pattern style choices to match your cheese type. It's for real! Let us show you. Our patented breakthrough micro-perforated technology is adapted to different types of pressed rind forming cheeses. We can easily match and exceed rind texture requirements as an integral part of a range of products related to the complete cheese making process. This process acts to seal the cheese while helping your cheese drain quickly. All this adds up to efficiency and increased production.

Have Confidence with Servi Doryl:

Servi Doryl is well aware of the sanitation and compliance requirements you have to face. We have invested years in the exclusive custom production of high quality products built with durability and care. Our products are constantly tested and adapted to meet any new professional request. A large portion of our annual sales revenue is re-invested for research & development. Servi Doryl constantly increases its technical performance and knowledge base, built year after year. Servi Doryl also recently gained USDA acceptance in the United States for its cheese form processes.

SOFT CHEESES

For proper drainage and shaping of your cheeses, we offer a range of dies and molds polypropylene block copolymer for food curdled milk and rennet, cylindrical shape, square, rectangular, oval or other shapes on request .

The dimensions and the grouping of blocks molds are adaptable to your needs and provided the color of your choice.

Liste des couleurs	
Natural	
Blue Servi	
Soft blue	
Pastel green	
Green meadow	
Pine green	
Light green	
Light yellow	
Dark yellow	
Orange	
Pink	
White	
Red	



SOFT CHEESES

Rounds ● ■ ○ ▲ ▼ ◆ ★

35 to 56 mm | 1 3/8 to 2 3/16 inch



Dimensions		Reference	Bottom	Perforation	Maximal depth		Maximal Height of Mould		Maximal Height of Extension		Single	Bande	1/2 block or block	Cliped	Welded	Standard Grouping	Use under conditions
					mm	inch	mm	inch	mm	inch							
35	1 3/8	PM 35/1		xx			70	2 3/4	70	2 3/4	x			x			x
44	1 23/32	PM 44/1					75	2 15/16	35	1 3/8	x		x				x
45	1 3/4	PM 45/1	x	x	8	5/16			47	1 27/32	x		x				x
45	1 3/4	PM 45/2	x	xx	20	25/32	70	2 3/4	20	25/32	x		x				x
45	1 3/4	PM 45/3		xx	70	2 3/4					x		x				x
48/60	1 7/8 2 11/32	PM 48/1	x	xx	170	6 11/16			85	3 11/32	x		x				
48/59,5	1 7/8 2 5/16	PM 48/2	x	xx	160	6 9/32			95	3 23/32	x		x				x
50/65,5	1 15/16 2 9/16	PM 50/1	x	xx	260	10 7/32					x					6x8	x
50	1 15/16	PM 50/2		xx			58	2 9/32			x		x				
50	1 15/16	PM 50/3		xx			40	1 9/16	38	1 15/32	x		x				
52	2 1/32	PM 52/1		xx			55	2 5/32			x		x				
52	2 1/32	PM 52/2		xx			58	2 9/32			x		x				
52	2 1/32	PM 52/3		xx			40	1 9/16	38	1 15/32	x		x				
54	2 1/8	PM 54/1		xx			230	9 1/32			x					4x11	
54	2 1/8	PM 54/2		xx			130	5 3/32	130	5 3/32	x			x			x
54	2 1/8	PM 54/3		xx			230	9 1/32	230	9 1/32	x		x				x
56	2 3/16	PM 56/1	x	x	22	27/32	32	1 1/4			x		x				
56	2 3/16	PM 56/2	x	x	22	27/32	32	1 1/4			x		x				
56/87	2 3/16 3 13/32	PM 56/3	x	xxxx	75	2 15/16					x		x			5x6	

0* : Separated bottom

SOFT CHEESES

★ ◆ ▼ ▲ ○ ■ ● Rounds
 59 to 75 mm | 2 5/16 to 2 17/32 inch



Dimensions		Reference	Bottom	Perforation	Maximal depth		Maximal Height of Mould		Maximal Height of Extension		Single	Bande	1/2 block or block	Cliped	Welded	Standard Grouping	Use under conditions
					mm	inch	mm	inch	mm	inch							
59/65	2 5/16 2 17/32	PM 59/1	x	xx	29	1 1/8	50	1 5/16	85	3 11/32	x			x		5x8	
60/75	2 11/32 2 15/16	PM 60/1	x	xx	65	2 17/32					x			x			
60	2 11/32	PM 60/2	x	xx	10	3/8	60	2 11/32	55	2 5/32	x				x		x
61	2 3/8	PM 61/1		x				80	3 1/8	73	2 27/32	x					
61	2 3/8	PM 61/2		x				125	4 29/32	117	4 19/32	x			x		
62/66	2 7/16 2 19/32	PM 62/1	x	x	63,5	2 1/2			65	2 17/32	x			x		6x7	
64	2 1/2	PM 64/1		x				50	1 15/16	20	25/32	x			x		
65	2 17/32	PM 65/1		xx				75	2 15/16	85	3 11/32	x			x		
65	2 17/32	PM 65/2						112	4 13/32			2			x		
67	2 5/8	PM 67/1	x	x	15	9/16	25	31/32	35	1 3/8	x			x			
68	2 21/32	PM 68/1		xx				80	3 1/8					x			
69	2 11/16	PM 69/1						100	3 29/32	100	3 29/32		2			x	
70	2 3/4	PM 70/1	x	xx	107	4 3/16			107	4 3/16		2			x		x
70	2 3/4	PM 70/2						85	3 11/32	85	3 11/32		x			x	
70	2 3/4	PM 70/3						90	3 17/32	90	3 17/32		2			x	
73	2 27/32	PM 73/1						95	3 23/32	95	3 23/32		2			x	
75	2 15/16	PM 75/1		xx				90	3 17/32	60	2 11/32	x			x		
75	2 15/16	PM 75/2		xxx				60	2 11/32	30	1 5/32	x			x		
75	2 15/16	PM 75/3						80	3 1/8	80	3 1/8		5			x	

0* : seperated bottom

You have not found the model you are looking for, we certainly have a solution for you.

Feel free to contact us : Tel +33 (0)2 47 96 11 50 – Fax +33 (0)2 47 96 11 77

SOFT CHEESES

Rounds ● ◻ ○ ▲ ▽ ◆ ★

78 to 87 mm | 3 1/16 to 3 13/32 inch



Dimensions		Reference	Bottom	Perforation	Maximal depth		Maximal Height of Mould		Maximal Height of Extension		Single	Bande	1/2 block or block	Cliped	Welded	Standard Grouping	Use under conditions
					mm	inch	mm	inch	mm	inch							
78	3 1/16	PM 78/1	x	xx	15	9/16	30	1 5/32	20	25/32	x			x			x
80	3 1/8	PM 80/1		xxx			65	2 17/32	30	1 5/32	x				x		
80	3 1/8	PM 80/2					106	4 5/32	106	4 5/32	x				x		
80	3 1/8	PM 80/3					79	3 3/32	79	3 3/32		5			x		
81	3 3/16	PM 81/1	x	xx	60	2 11/32	25	31/32			x			x			
83	3 1/4	PM 83/1					82	3 7/32	82	3 7/32		5			x		
83	3 1/4	PM 83/2	x	xx	60	2 11/32			25	31/32		5			x		x
83,5	3 9/32	PM 83,5/1					75	2 15/16	75	2 15/16		5			x		
83,5	3 9/32	PM 83,5/2					100	3 29/32	100	3 29/32		5			x		
83,5	3 9/32	PM 83,5/3		x			60	2 11/32	40	1 9/16	x			x			x
83,5	3 9/32	PM 83,5/4	x		12	15/32	27	1 1/16	30	1 5/32		3			x		x
85	3 11/32	PM 85/1					106	4 5/32	106	4 5/32		5			x		
85	3 11/32	PM 85/2					74,5	2 29/32	74,5	2 29/32		6			x		
85	3 11/32	PM 85/3	x	xxx	12	15/32	21	13/16	20	25/32	x			x			
85	3 11/32	PM 85/4		xxx			72	2 13/16	71,50	2 13/16	x			x			
85	3 11/32	PM 85/5	x	xxx	12	15/32	85,5	3 11/32			x			x			
85	3 11/32	PM 85/6	x	xxx	72	2 13/16			71,5	2 13/16	x			x			
87	3 13/32	PM 87/1	x	xxxx	0*		296	11 5/8	302	11 7/8	x				x		x

0* : Separated bottom

SOFT CHEESES

★ ◆ ▼ ▲ ○ ■ ● Rounds
 90 to 104 mm | 3 17/32 to 4 3/32 inch



Dimensions		Reference	Bottom	Perforation	Maximal depth		Maximal Height of Mold		Maximal Height of Extension		Single	Bande	1/2 block or block	Cliped	Welded	Standard Grouping	Use under conditions
					mm	inch	mm	inch	mm	inch							
90	3 17/32	PM 90/1		xxxx			110	4 5/16			x				x		
90	3 17/32	PM 90/2	x	xxxx	15	9/16	75	2 15/16	85	3 11/32	x				x		x
92	3 19/32	PM 92/1					105	4 1/8			x				x		
92/100	3 19/32 3 29/32	PM 92/2	x	xx	78	3 1/16					x			x			
93	3 21/32	PM 93/1					75	2 15/16	75	2 15/16	x			x			
93	3 21/32	PM 93/2		xx			75	2 15/16	75	2 15/16	x			x			
93	3 21/32	PM 93/3		xx			75	2 15/16	35	1 3/8	x				x		
93	3 21/32	PM 93/4		xx			100	3 29/32	100	3 29/32	x				x		
95	3 23/32	PM 95/1	x		0*	0*	63	2 15/32			x				x		
95/105	3 23/32 4 1/8	PM 95/2	x	xx	58	2 9/32					x				x		
96	3 3/4	PM 96/1					66,5	2 19/32	66,5	2 19/32		5			x		
96	3 3/4	PM 96/2					85,5	3 11/32	85,5	3 11/32		2			x		
98	3 27/32	PM 98/1		xx			55	2 5/32			x			x			
98	3 27/32	PM 98/2					85,5	3 11/32	85,5	3 11/32		2			x		
100	3 29/32	PM 100/1					85,5	3 11/32				2			x		
100	3 29/32	PM 100/2	x	xx	60	2 11/32			50	1 15/16		2			x		
100	3 29/32	PM 100/3		xx			60	2 11/32	130	5 3/32	x				x		
103	4 1/32	PM 103/1					53	2 1/16	25	31/32		4			x		x
103	4 1/32	PM 103/2					74	2 29/32	74	2 29/32			x				4 x 5
104	4 3/32	PM 104/1					81	3 3/16	81	3 3/16			x				4 x 5

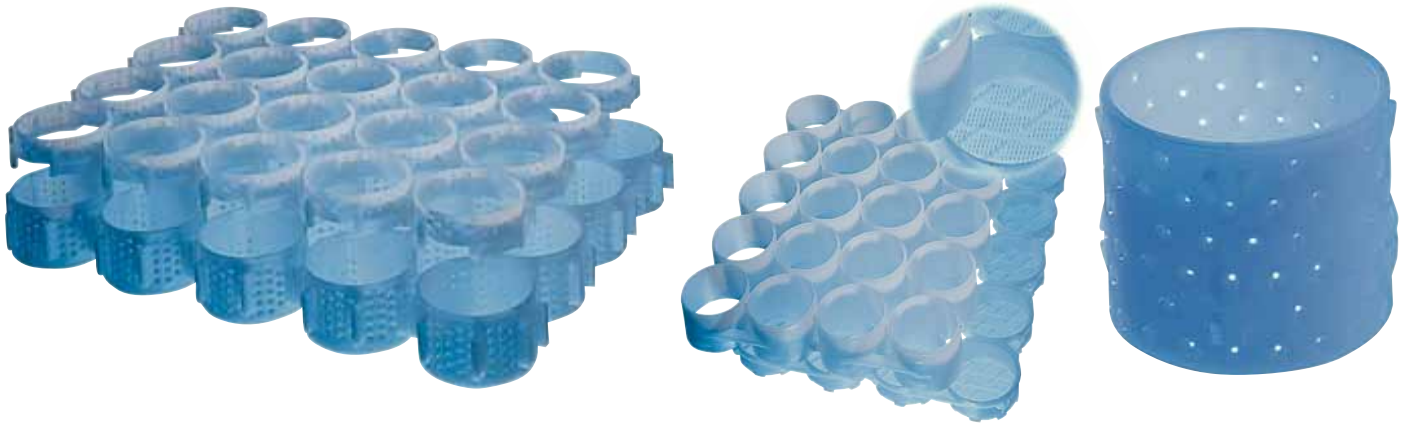
0* : seperated bottom

You have not found the model you are looking for, we certainly have a solution for you.
 Feel free to contact us : Tel +33 (0)2 47 96 11 50 – Fax +33 (0)2 47 96 11 77

SOFT CHEESES

Rounds ● ■ ○ ▲ ▼ ◆ ★

105 to 115 mm | 4 1/8 to 4 1/2 inch

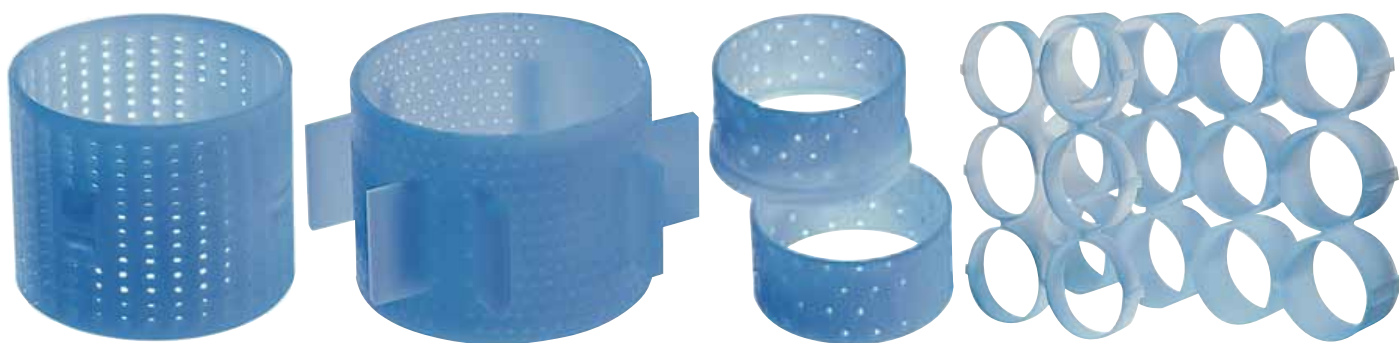


Dimensions		Reference	Bottom	Perforation	Maximal depth		Maximal Height of Mould		Maximal Height of Extension		Single	Bande	1/2 block or block	Cliped	Welded	Standard Grouping	Use under conditions
					mm	inch	mm	inch	mm	inch							
105	4 1/8	PM 105/1		xxx			70	2 3/4	30	1 5/32	x				x		
105	4 1/8	PM 105/2	x		75/5	2 15/16 3/16			85	3 11/32	x				x		
106	4 5/32	PM 106/1	x	x	12/32	15/32 1 1/4	32	1 1/4	36	1 13/32		2			x		
107	4 3/16	PM 107/1		xxxx			65	2 17/32	30,5	1 3/16	x				x		
108	4 1/4	PM 108/1					80	31/8	75	2 15/16			x			4x5	
108	4 1/4	PM 108/2					72	2 13/16				3			x		
108/123	4 1/4 4 13/16	PM 108/3	x	xxx	70	2 3/4					x						
110	4 5/16	PM 110/1					75	2 15/16	75	2 15/16			x			4x5	
110	4 5/16	PM 110/2	x	xxx	45/5	1 3/4 3/16					x				x		
110	4 5/16	PM 110/3	x	xxx	45	1 3/4					x				x		x
110	4 5/16	PM 110/4	x	xxx	142	5 9/16	142	5 9/16	142	5 9/16	x				x		
110	4 5/16	PM 110/5					80	3 1/8	80	3 1/8			x			4x5	
110	4 5/16	PM 110/6		xxx			100	3 29/32	100	3 29/32	x			x			
110	4 5/16	PM 110/7		xxx			76	2 31/32	76	2 31/32	x				x		
112	4 13/32	PM 112/1					81	3 3/16	81	3 3/16			x			5x5	
112	4 13/32	PM 112/2		x			75	2 15/16	75	2 15/16		5			x		
112	4 13/32	PM 112/3					74	2 29/32	74	2 29/32			x			4x5	
115	4 1/2	PM 115/1		xxxx			100	3 29/32	40	1 9/16	x			x			

0* : Separated bottom

SOFT CHEESES

★ ◆ ▼ ▲ ○ ■ ● Rounds
 115 to 135 mm | 4 1/2 to 5 5/16 inch



Dimensions		Reference	Bottom	Perforation	Maximal depth		Maximal Height of Mould		Maximal Height of Extension		Single	Bande	1/2 block or block	Cliped	Welded	Standard Grouping	Use under conditions
mm	inch				mm	inch	mm	inch	mm	inch							
115	4 1/2	PM 115/2		xxx			100	3 29/32	100	3 29/32	x		x				
115	4 1/2	PM 115/3		xxx			60	2 11/32	130	5 3/32	x			x			
118	4 5/8	PM 118/1	x	xx	0*	0*	50	1 15/16	50	1 15/16		4		x			
118	4 5/8	PM 118/2					55	2 5/32	55	2 5/32	x			x			
120	4 23/32	PM 120/1		xxxx			90	3 17/32			x			x			
120	4 23/32	PM 120/2	x	xxxx	30	1 5/32	50	1 15/16	40	1 9/16	x			x			
123	4 13/16	PM 123/1					95	3 23/32	95	3 23/32		2		x			
125	4 29/32	PM 125/1		xx			48	1 7/8	58	2 9/32	x		x				
125	4 29/32	PM 125/2					72	2 13/16	72	2 13/16		3		x			x
130	5 3/32	PM 130/1		xxx			70	2 3/4	130	5 3/32	x			x			
130	5 3/32	PM 130/2					103,5	4 1/16	103,5	4 1/16	x			x			x
130	5 3/32	PM 130/3		xxxx			55	2 5/32			x						x
130	5 3/32	PM 130/4	x	xxx	20	25/32			30	1 5/32	x			x			
130	5 3/32	PM 130/5		xxx			97	3 13/16	62	2 7/16	x		x				
130	5 3/32	PM 130/6					85	3 11/32	40	1 9/16			x	x		3x4	
130	5 3/32	PM 130/7					75	2 15/16	75	2 15/16		3		x			
130	5 3/32	PM 130/8					65	2 17/32	65	2 17/32			x			3x5	
135	5 5/16	PM 135/1					75	2 15/16	75	2 15/16		3		x			

0* : seperated bottom

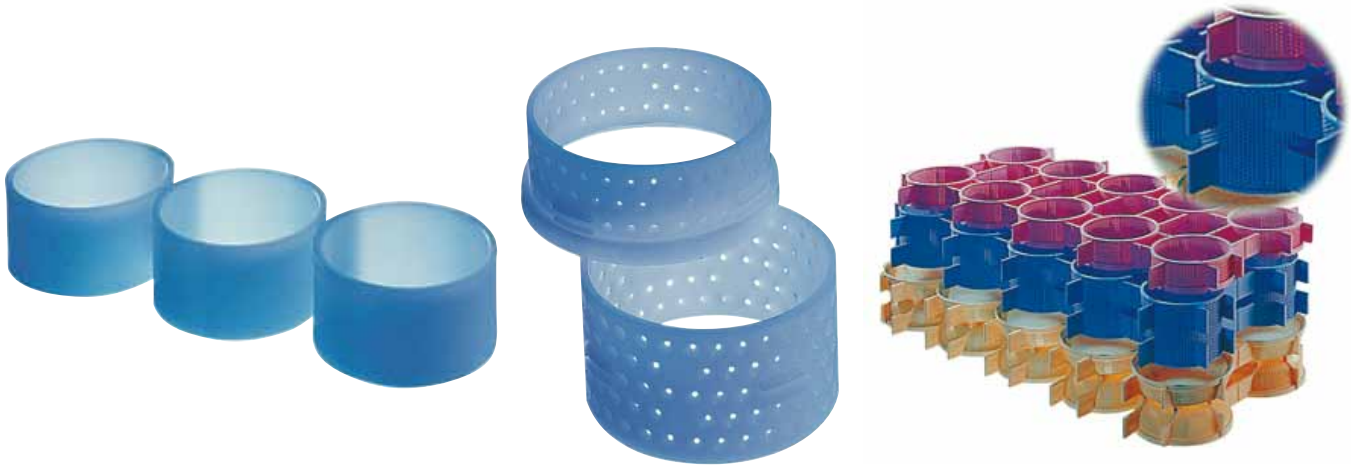
You have not found the model you are looking for, we certainly have a solution for you.

Feel free to contact us : Tel +33 (0)2 47 96 11 50 – Fax +33 (0)2 47 96 11 77

SOFT CHEESES

Rounds ● ■ ○ ▲ ▼ ◆ ★

135 to 170 mm | 5 5/16 to 6 11/16 inch



Dimensions		Reference	Bottom	Perforation	Maximal depth		Maximal Height of Mould		Maximal Height of Extension		Single	Bande	1/2 block or block	Cliped	Welded	Standard Grouping	Use under conditions
					mm	inch	mm	inch	mm	inch							
135	5 5/16	PM 135/2					85	3 11/32	85	3 11/32		2			x		x
140	5 1/2	PM 140/1					116	4 9/16	116	4 9/16	x				x		
145	5 11/16	PM 145/1	x	xxxx	25	31/32	80	3 1/8	50	1 15/16	x				x		x
145	5 11/16	PM 145/2		xxxx			120	4 23/32	50	1 15/16	x				x		x
145	5 11/16	PM 145/3	x	xxxx	0*	0*	120	4 23/32			x				x		x
145	5 11/16	PM 145/4		xxxx					80	3 1/8	x				x		
145	5 11/16	PM 145/5		xxx			85	3 11/32	55	2 5/32	x			x			
149/154	5 27/32 6 1/16	PM 149/1	x		80	3 1/8					x				x		
150	5 7/8	PM 150/1					123	4 13/16			x				x		
150	5 7/8	PM 150/2	x		109	4 9/32	109	4 9/32	109	4 9/32	x				x		
160	6 9/32	PM 160/1					110	4 5/16	110	4 5/16	x			x			
160	6 9/32	PM 160/2	x	xxx	0*	0*	120	4 23/32			x				x		
160	6 9/32	PM 160/3	x	xxx	0*	0*	110	4 5/16	50	1 15/16		2			x		
160	6 9/32	PM 160/4					55	2 5/32	55	2 5/32	x				x		
166	6 17/32	PM 166/1	x	xxxx	40	1 9/16	51	2	40	1 9/16	x				x		
168	6 19/32	PM 168/1		xxx			130	5 3/32	40	1 9/16	x				x		
170	6 11/16	PM 170/1					116	4 9/16	116	4 9/16	x			x	x		
170	6 11/16	PM 170/2		xxxx			95	3 23/32	45	1 3/4	x			x			
170	6 11/16	PM 170/3					90	3 17/32			x				x		

0* : Separated bottom

SOFT CHEESES

★ ◆ ▼ ▲ ● ■ ● Rounds
 171 to 194 mm | 6 23/32 to 7 5/8 inch



Dimensions		Reference	Bottom	Perforation	Maximal depth		Maximal Height of Mould		Maximal Height of Extension		Single	Bande	1/2 block or block	Cliped	Welded	Standard Grouping	Use under conditions
mm	inch				mm	inch	mm	inch	mm	inch							
171/184	6 23/32 7 7/32	PM 171/1	x	xxxx	162	6 3/8					x						x
180	7 1/16	PM 180/1					125	4 29/32	125	4 29/32	x				x		
180	7 1/16	PM 180/2		xxxx			100	3 29/32	50	1 15/16	x			x			
185	7 9/32	PM 185/1	x	xxxx	0*	0*	80	3 1/8			x			x	x		
190	7 15/32	PM 190/1	x	xxxx	50/5	1 15/16 3/16					x				x		
190	7 15/32	PM 190/2					166,5	6 17/32	166,5	6 17/32	x			x	x		
190	7 15/32	PM 190/3		xxxx			130	5 3/32	130	5 3/32	x				x		
190	7 15/32	PM 190/4		xxxx			130	5 3/32	50	1 15/16	x				x		
190/5	7 15/32 3/16	PM 190/5	x		30	1 5/32	67	2 5/8	67	2 5/8	x			x			x
190	7 15/32	PM 190/6		xxx			70	2 3/4	50	1 15/16	x				x		x
190	7 15/32	PM 190/7					127,5	5	127,5	5	x			x			x
190	7 15/32	PM 190/8		xxxx			70	2 3/4	42	1 5/8	x			x			x
190	7 15/32	PM 190/9		xxxx			110	4 5/16	50	1 15/16	x				x		
194	7 5/8	PM 194/1					165	6 15/32	165	6 15/32	x			x	x		

0* : seperated bottom

You have not found the model you are looking for, we certainly have a solution for you.
 Feel free to contact us : Tel +33 (0)2 47 96 11 50 – Fax +33 (0)2 47 96 11 77

SOFT CHEESES

Rounds ● ■ ○ ▲ ▼ ◆ ★

200 to 225 mm | 7 27/32 to 8 27/32 inch

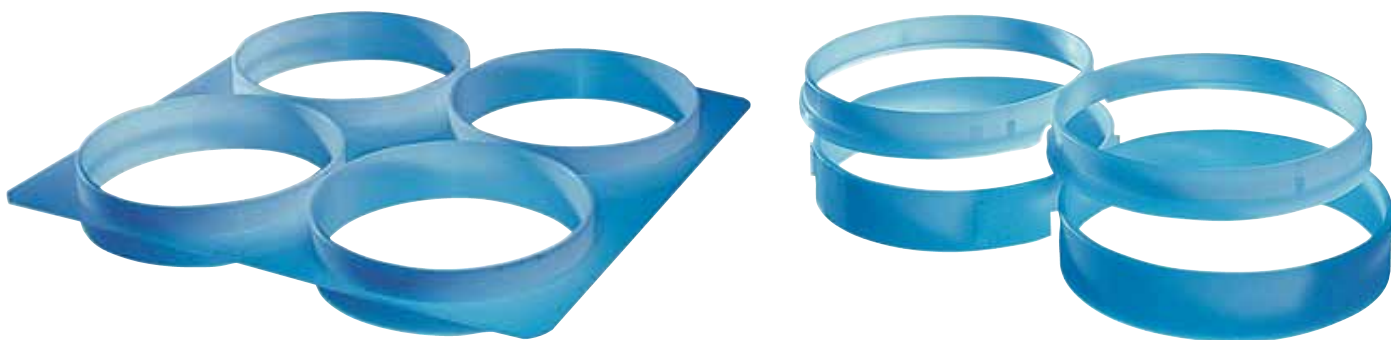


Dimensions		Reference	Bottom	Perforation	Maximal depth		Maximal Height of Mould		Maximal Height of Extension		Single	Bande	1/2 block or block	Cliped	Welded	Standard Grouping	Use under conditions
					mm	inch	mm	inch	mm	inch							
200	7 27/32	PM 200/1	x	x	190	7 15/32					x						x
200	7 27/32	PM 200/2	x	xx	201	7 29/32					x				x		
200	7 27/32	PM 200/3	x	xx	172,5	6 25/32					x				x		
200	7 27/32	PM 200/4		xxx			85	3 11/32	55	2 5/32	x			x			x
200	7 27/32	PM 200/5		xx			150	5 7/8			x			x			x
200	7 27/32	PM 200/6		xxxx			120	4 23/32	50	1 15/16	x				x		x
200	7 27/32	PM 200/7					125	4 29/32	25	4 29/32	x				x		x
200	7 27/32	PM 200/8					227	8 29/32	227	8 29/32	x			x	x		
205	8 1/16	PM 205/1					123	4 13/16	123	4 13/16	x			x	x		
206	8 3/32	PM 206/1					125	4 29/32	125	4 29/32	x				x		
210	8 1/4	PM 210/1					124	4 7/8	124	4 7/8	x			x	x		
210	8 1/4	PM 210/2					95	3 23/32	95	3 23/32	x				x		
213	8 3/8	PM 213/1	x	xx	121	4 3/4					x				x		x
220	8 21/32	PM 220/1		xx			170	6 11/16			x				x		x
220	8 21/32	PM 220/2		xx			114	4 15/32	114	4 15/32	x			x	x		
220	8 21/32	PM 220/3					125	4 29/32	125	4 29/32	x				x		
220	8 21/32	PM 220/4		xxxx			90	1 15/16	50	1 15/16	x			x			
225	8 27/32	PM 225/1	x		80	3 1/8					x				x		

0* : Separated bottom

SOFT CHEESES

★ ◆ ▼ ▲ ○ ■ ● Rounds
 230 to 340 mm | 9 1/32 to 13 3/8 inch



Dimensions		Reference	Bottom	Perforation	Maximal depth		Maximal Height of Mold		Maximal Height of Extension		Single	Bande	1/2 block or block	Cliped	Welded	Standard Grouping	Use under conditions
mm	inch				mm	inch	mm	inch	mm	inch							
230	9 1/32	PM 230/1	x	xxxx	47/5	1 27/32 3/16					x				x		x
235	9 1/4	PM 235/1					60	2 11/32			x				x		
235	9 1/4	PM 235/2	x	x	140	5 1/2	102	4			x				x		x
237	9 /16	PM 237/1					105	4 1/8			x			x	x		
240	9 7/16	PM 240/1					60	2 11/32				2			x		
248	9 3/4	PM 248/1					223	8 3/4			x			x	x		x
248	9 3/4	PM 248/2		xxx			223	8 3/4			x			x	x		x
260	10 7/32	PM 260/1							40	1 9/16	x				x		
270	10 5/8	PM 270/1					153,5	6 1/32	153,5	6 1/32	x			x	x		
308	12 1/8	PM 308/1					215	8 7/16	185	7 9/32	x				x		x
318	12 1/2	PM 318/1					125	4 29/32	125	4 29/32	x				x		
320	12 19/32	PM 320/1					125	4 29/32	125	4 29/32	x				x		
320	12 19/32	PM 320/2					85	3 11/32				x				1x2	
324	12 3/4	PM 324/1					113	4 7/16	113	4 7/16	x				x		
326	12 13/16	PM 326/1					113	4 7/16	113	4 7/16	x				x		
330	12 31/32	PM 330/1							20	25/32	x				x		
340	13 3/8	PM 340/1					72	2 15/16	75	2 15/16	x				x		
340	13 3/8	PM 340/2					80	3 1/8			x				x		
340	13 3/8	PM 340/3					152	5 31/32			x			x	x		x

0* : seperated bottom

You have not found the model you are looking for, we certainly have a solution for you.
 Feel free to contact us : Tel +33 (0)2 47 96 11 50 – Fax +33 (0)2 47 96 11 77

SOFT CHEESES

 Squares    

55 to 106 mm | 2 5/32 to 4 5/32 inch

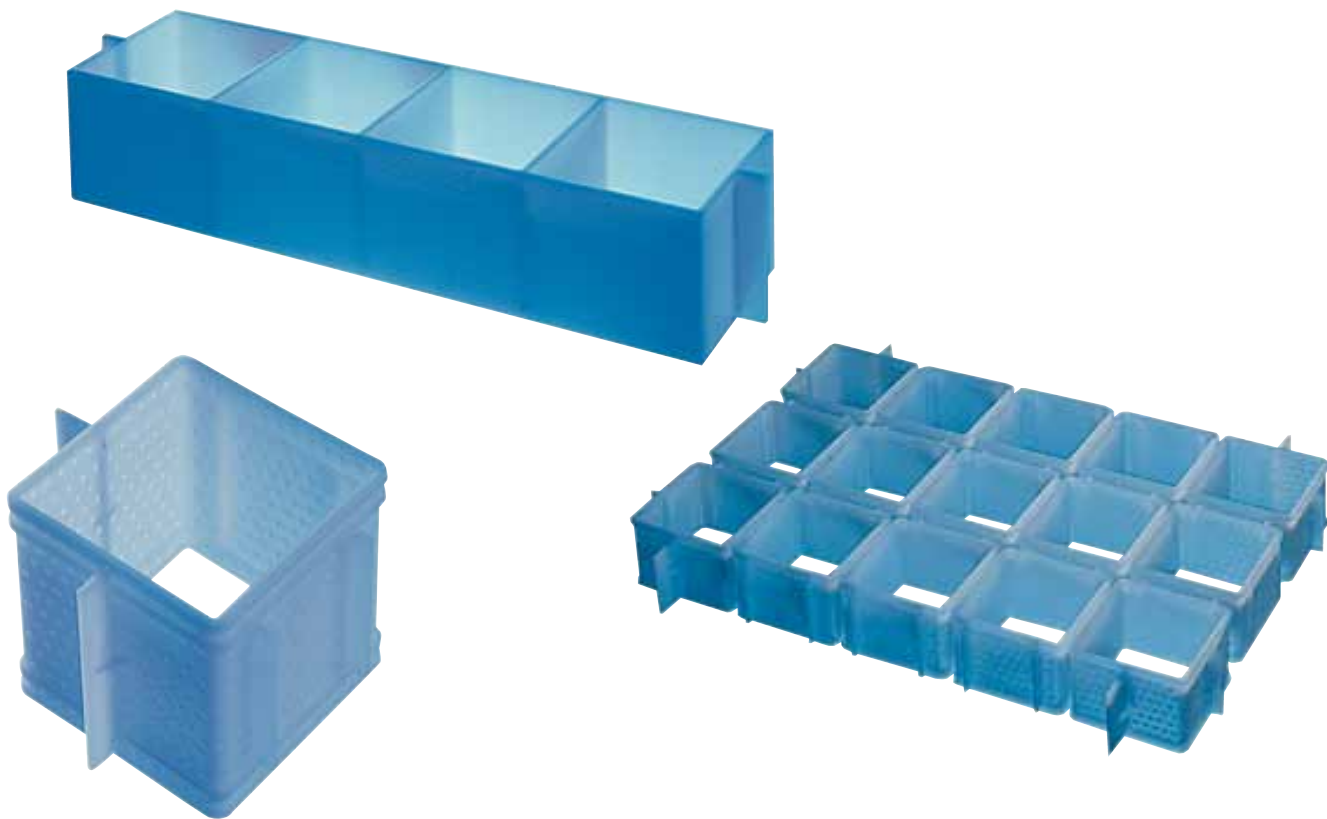


Dimensions		Reference	Bottom	Perforation	Maximal depth		Maximal Height of Mould		Maximal Height of Extension		Single	Bande	1/2 block or block	Cliped	Welded	Standard Grouping	Use under conditions
mm	inch				mm	inch	mm	inch	mm	inch							
55	2 5/32	PMC 55/1		xx			142	5 9/16	142	5 9/16	x			x			
55	2 5/32	PMC 55/2		xx			135	5 5/16	135	5 5/16	x				x		
80	3 1/8	PMC 80/1					77,5	3 1/32				5			x		x
80	3 1/8	PMC 80/2		xxx			65	2 17/32	30	1 5/32	x			x			
81	3 3/16	PMC 81/1		xxx			85	3 11/32			x				x		x
84	3 9/32	PMC 84/1					75	2 15/16			x				x		x
90	3 17/32	PMC 90/1					47	1 27/32				4			x		x
90	3 17/32	PMC 90/2					82	3 7/32				3			x		
90	3 17/32	PMC 90/3		xxx			74	2 29/32			x				x		x
90	3 17/32	PMC 90/4					67	2 5/8					x			5x6	
90	3 17/32	PMC 90/5		xxx			84,5	3 5/16			x				x		x
90	3 17/32	PMC 90/6					125	4 29/32	125	4 29/32		2			x		
90	3 17/32	PMC 90/7					75	2 15/16				4			x		
92	3 19/32	PMC 92/1	x		73	2 27/32					x				x		
92	3 19/32	PMC 92/2					67	2 5/8					x		x	5x6	
95	3 23/32	PMC 95/1					74,5	2 29/32				4			x		
100	3 29/32	PMC 100/1					144,5	5 11/16				2			x		
106	4 5/32	PMC 106/1					80	3 1/8	30	1 5/32	x				x		x
106	4 5/32	PMC 106/2					90	3 17/32			x				x		

0* : Separated bottom

SOFT CHEESES

★ ◆ ▼ ▲ ● ■ ● Squares
 110 to 180 mm | 4 5/16 to 7 1/16 inch



Dimensions		Reference	Bottom	Perforation	Maximal depth		Maximal Height of Mold		Maximal Height of Extension		Single	Bande	1/2 block or block	Cliped	Welded	Standard Grouping	Use under conditions
					mm	inch	mm	inch	mm	inch							
110	4 5/16	PMC 110/1		xxxx			82	3 7/32			x				x		x
110	4 5/16	PMC 110/2		xxxx			82	3 7/32	50	1 15/16	x				x		
110	4 5/16	PMC 110/3					82	3 7/32				2			x		x
110	4 5/16	PMC 110/4					94	3 11/16				4			x		
110	4 5/16	PMC 110/5					70	2 3/4				4			x		
110	4 5/16	PMC 110/6					82	3 7/32	35	1 3/8		2			x		
125		PMC 125/1		xxxx			100	3 29/32	40	1 9/16	x			x			x
125		PMC 125/2		xxxx			125	4 29/32			x				x		x
160		PMC 160/1					105	4 1/8	105	4 1/8	x				x		x
180		PMC 180/1		xxx			120	4 23/32	50	1 15/16	x				x		x
180		PMC 180/2		xxx			70	2 3/4	45	1 3/4	x			x	x		

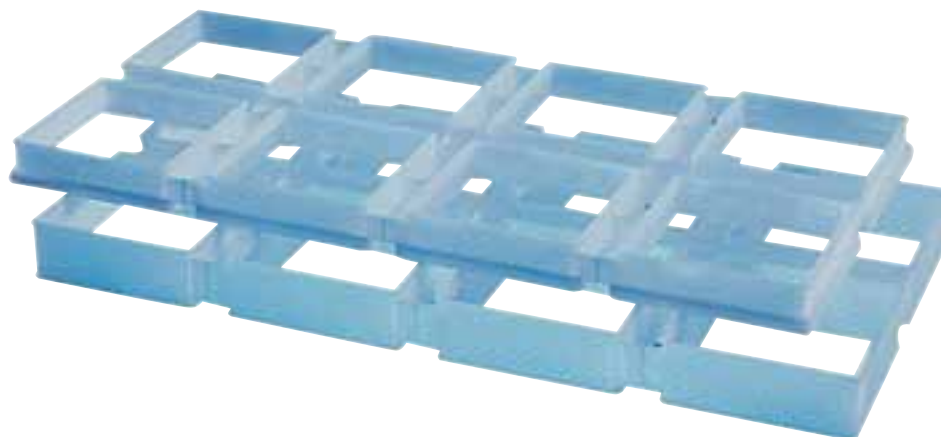
0* : seperated bottom

You have not found the model you are looking for, we certainly have a solution for you.
 Feel free to contact us : Tel +33 (0)2 47 96 11 50 – Fax +33 (0)2 47 96 11 77

SOFT CHEESES

Squares ● ■ □ ○ ▲ ▼ ◆ ☆

190 à 240 mm | 7 15/32 to 9 7/16 inch



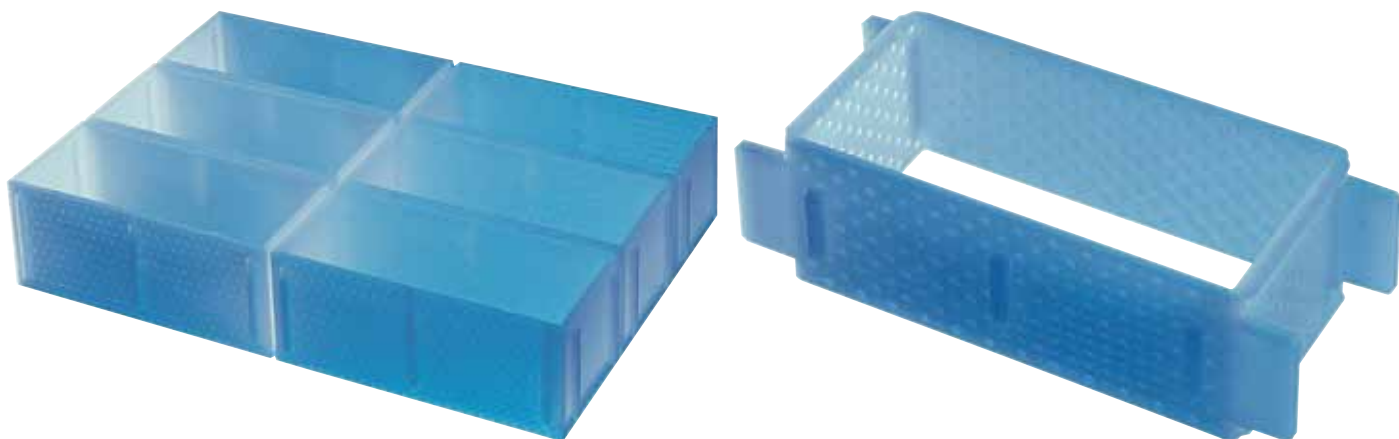
Dimensions		Reference	Bottom	Perforation	Maximal depth		Maximal Height of Mould		Maximal Height of Extension		Single	Bande	1/2 block or block	Cliped	Welded	Standard Grouping	Use under conditions
					mm	inch	mm	inch	mm	inch							
190	7 15/32	PMC 190/1		xxx			84,5	3 5/16			x				x		x
190	7 15/32	PMC 190/2		xxx			85	3 11/32	65	2 17/32	x				x		x
190	7 15/32	PMC 190/3		xxx			85	3 11/32	55	2 5/32	x			x			x
190	7 15/32	PMC 190/4	x	xx	0*	0*											
190	7 15/32	PMC 190/5	x	xx	10	3/8						2			x		
190	7 15/32	PMC 190/6	x	xx	10	3/8						2			x		
190	7 15/32	PMC 190/7		xxx			80	3 1/8	45		x				x		
190	7 15/32	PMC 190/8	x		0*	0*						2			x		
190	7 15/32	PMC 190/9		xxx			111	4 11/32	111	4 11/32	x				x		
190	7 15/32	PMC 190/10	x	xx	0*	0*						2			x		x
190	7 15/32	PMC 190/11					80	3 1/8	45	1 3/4	x				x		
190	7 15/32	PMC 190/12		xxx			70	2 3/4	42	1 5/8	x				x		x
190	7 15/32	PMC 190/13		xxx			70	2 3/4	50	1 15/16	x				x		
190	7 15/32	PMC 190/14		xxx					60	2 11/32	x				x		
215	8 7/16	PMC 215/1	x	xxx	0*	0*	90	3 17/32			x				x		
240	9 7/16	PMC 240/1		xx			95	3 23/32			x				x		x

0* : Separated bottom

SOFT CHEESES

★ ▼ ▲ ● ■ □ ○ Rectangulars

32x208 to 78x165 mm | 1 1/4x8 3/16 to 31/16x6 15/32 inch



Dimensions		Reference	Bottom	Perforation	Maximal depth		Maximal Height of Mould		Maximal Height of Extension		Single	Bande	1/2 block or block	Clipped	Welded	Standard Grouping	Use under conditions
mm	inch				mm	inch	mm	inch	mm	inch							
32 x 208	1 1/4 x 8 3/16	PMR 32x208/1	x	xxx	17	21/32	35	1 3/8	30	1 5/32	x				x		x
40 x 125	1 9/16 x 4 29/32	PMR 40x125/1	x	xxx	70	2 3/4					x				x		x
50 x 75	1 15/16 x 2 15/16	PMR 50x75/1	x	xxx	27	1 1/16			49	1 29/32	x				x		x
50 x 104	1 15/16 x 4 3/32	PMR 50x104/1					87	3 13/32	30	1 5/32		2			x		x
50 x 100	1 15/16 x 3 29/32	PMR 50x100/1	x	xxxx	70	2 3/4					x				x		x
50 x 100	1 15/16 x 3 29/32	PMR 50x100/2	x	xxx	82	3 7/32					x				x		x
56,5 x 90	2 7/32 x 3 17/32	PMR 56.5x90/1	x	xxx	55	2 5/32			30	1 5/32	x				x		
60 x 120	2 11/32 x 4 23/32	PMR 60x120/1					103	4 1/32				3			x		
70 x 110	2 3/4 x 4 5/16	PMR 70x110/1					72	2 13/16				5			x		
70 x 120	2 3/4 x 4 23/32	PMR 70x120/1					45	1 3/4			x				x		
75 x 137	2 15/16 x 5 3/8	PMR 75x137/1					70	2 3/4			x				x		x
76 x 116	2 31/32 x 4 9/16	PMR 76x116/1					60	2 11/32					x		x	4x6	
78 x 165	3 1/16 x 6 15/32	PMR 78x165/1					67	2 5/8			x				x		x

0* : seperated bottom

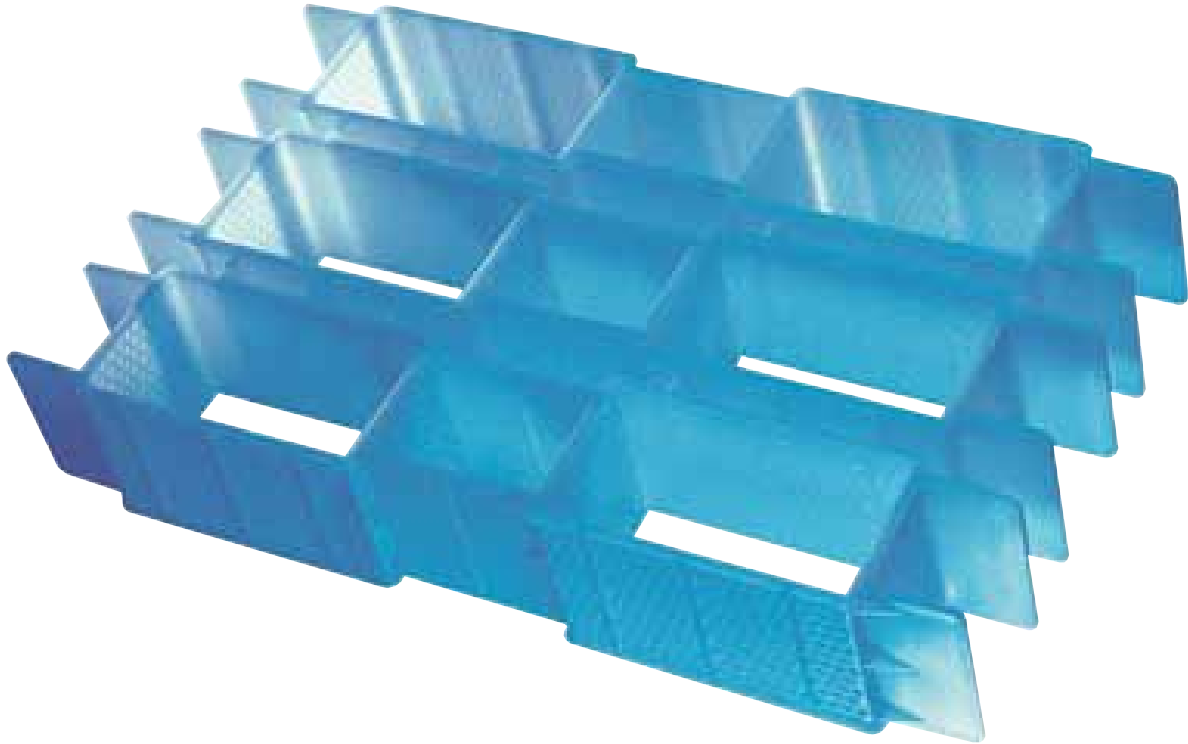
You have not found the model you are looking for, we certainly have a solution for you.

Feel free to contact us : Tel +33 (0)2 47 96 11 50 – Fax +33 (0)2 47 96 11 77

SOFT CHEESES

Rectangulars 

80x130 à 380x570 mm | 3 1/8x5 3/32 to 14 15/16x22 7/16 inch



Dimensions		Reference	Bottom	Perforation	Maximal depth		Maximal Height of Mould		Maximal Height of Extension		Single	Bande	1/2 block or block	Clipped	Welded	Standard Grouping	Use under conditions
					mm	inch	mm	inch	mm	inch							
80 x 130	3 1/8 x 5 3/32	PMR 80x130/1					77	3 1/32			x				x		x
80 x 175	3 1/8 x 6 7/8	PMR 80x175/1					64	2 1/2				2			x		
89 x 190	3 1/2 x 7 15/32	PMR 89x190/1		xxx			70	2 3/4	42	1 5/8	x				x		x
110 x 220	4 5/16 x 8 21/32	PMR 110x220/1	x	xx R	165	6 15/32					x				x		
110 x 260	4 5/16 x 10 7/32	PMR 110x260/1	x	xxx	42	1 5/8	110	4 5/16			x				x		x
115 x 220	4 1/2 x 8 21/32	PMR 115x220/1		R			140	5 1/2	99,5	3 29/32	x				x		
120 x 220	4 23/32 x 8 21/32	PMR 120x220/1					107	4 3/16				2			x		
120 x 240	4 23/32 x 9 7/16	PMR 120x240/1					90	3 17/32			x				x		
120 x 300	4 23/32 x 11 25/32	PMR 120x300/1	x	xx	229	9					x				x		x
380 x 570	14 15/16 x 22 7/16	PMR 380x570/1					63	2 15/32	63	2 15/32	x						

0* : Separated bottom

SOFT CHEESES

★ ◆ ▼ ▲ ● ■ □ ○ Oval's

54x90 à 200x280 mm | 2 1/8x3 17/32 to 7 27/32x11 inch



Dimensions		Reference	Bottom	Perforation	Maximal depth		Maximal Height of Mould		Maximal Height of Extension		Single	Bande	1/2 block or block	Cliped	Welded	Standard Grouping	Use under conditions
					mm	inch	mm	inch	mm	inch							
54 x 90	2 1/8 x 3 17/32	PMO 54x90/1					84	3 9/32				5			x		x
58 x 88	2 9/32 x 3 7/16	PMO 58x88/1		xx			72	2 13/16	46	1 25/32		5			x		
59 x 148	2 5/16 x 5 13/16	PMO 59x148/1		x			48	1 7/8	19	23/32	x				x		x
62 x 132	2 7/16 x 5 3/16	PMO 62x132/1					84,5	3 5/16				3			x		
63,5 x 103,5	2 1/2 x 4 1/16	PMO 63,5x103,5/1					60	2 11/32				8			x		
64 x 94	2 1/2 x 3 11/16	PMO 64x94/1					70	2 3/4	70	2 3/4	x				x		x
65 x 114	2 17/32 x 4 15/32	PMO 65x114/1					105	4 1/8				3			x		x
66 x 155	2 19/32 x 6 3/32	PMO 66x155/1	x		0	0						3			x		x
67 x 114	2 5/8 x 4 15/32	PMO 67x114/1					116	4 9/16	116	4 9/16		3			x		
73 x 121	2 27/32 x 4 3/4	PMO 73x121/1					80	3 1/8			x				x		x
86 x 128	3 3/8 x 5 1/32	PMO 86x128/1	x	xx	60	2 11/32			80	3 4/8	x			x			x
87,6 x 156,6	3 7/16 x 6 5/32	PMO 87,6x156,6/1					75	2 15/16	35	1 3/8		5			x		
90 x 150	3 17/32 x 5 7/8	PMO 90x150/1					80	3 1/8				3			x		x
200 x 265	7 27/32 x 10 13/32	PMO 200x265/1	x	x	30	1 5/32	70	2 3/4			x				x		x
200 x 280	7 27/32 x 11	PMO 200x280/1					76	2 31/32			x				x		x

0* : seperated bottom

You have not found the model you are looking for, we certainly have a solution for you.

Feel free to contact us : Tel +33 (0)2 47 96 11 50 – Fax +33 (0)2 47 96 11 77

SOFT CHEESES

Pyramid's 

41/25 à 87,5/30 mm | 1 19/32 // 31/32 to 3 7/16 // 1 5/32 inch



Dimensions		Reference	Bottom	Perforation	Maximal depth		Maximal Height of Mould		Maximal Height of Extension		Single	Bande	1/2 block or block	Cliped	Welded	Standard Grouping	Use under conditions
					mm	inch	mm	inch	mm	inch							
41/25	1 19/32 31/32	PMPY 41-25/1		xx			40	1 9/16			x			x			x
45/14	1 3/4 17/32	PMPY 45-14/1	x	xx	58	2 9/32					x			x			x
45,5/14	1 25/32 17/32	PMPY 45,5-14/1	x	xx	50	1 15/16					x			x			x
79/48	3 3/32 1 7/8	PMPY 79-48/1		xx			76	2 31/32					x			4x5	
80/53	3 1/8 2 1/16	PMPY 80-53/1	x	xx	85	3 11/32					x				x		x
80/53	3 1/8 2 1/16	PMPY 80-53/2	x	xx	85	3 11/32					x				x		x
81,5/30	3 3/16 1 5/32	PMPY 81,5-30/1	x	xx	109	4 9/32					x				x		x
85/53	3 11/32 2 1/16	PMPY 85-53/1	x	xx	101	3 31/32					x				x		x
87,5/30	3 7/16 1 5/32	PMPY 87,5-30/1	x	xx	119	4 21/32					x				x		x

SOFT CHEESES

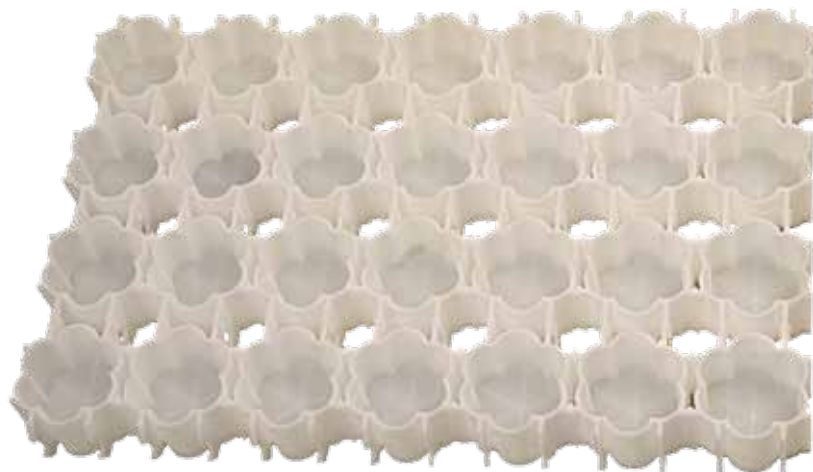


Dimensions		Reference	Bottom	Perforation	Maximal depth		Maximal Height of Mould		Maximal Height of Extension		Single	Bande	1/2 block or block	Cliped	Welded	Standard Grouping	Use under conditions
					mm	inch	mm	inch	mm	inch							
104x50/96x25	4 3/32 x 1 15/16 3 3/4 x 31/32	PML/1	x	xxx	40	1 9/16			30	1 5/32	x				x		x
105x40/100xR26	4 1/8 x 1 9/16 3 29/32 x R31/32	PML/2	x		38,5	1 1/2					x				x		x
116x52/100x29	4 9/16 x 2 1/32 3 29/32 x 1 1/8	PML/3	x	xx	39,5	1 17/32					x				x		x
154x72/135x50	6 1/16 x 2 13/16 5 5/16 x 1 15/16	PML/4	x	xx	42	1 5/8					x				x		x
200x90/160x70	7 27/32 x 3 17/32 6 9/32 x 2 3/4	PML/5	x	xx	80	3 1/8					x				x		x
225x109/221x62	8 27/32 x 4 9/32 8 11/16 x 2 7/16	PML/6	x		83,5	3 9/32					x				x		x

0* : seperated bottom

You have not found the model you are looking for, we certainly have a solution for you.
 Feel free to contact us : Tel +33 (0)2 47 96 11 50 – Fax +33 (0)2 47 96 11 77

SOFT CHEESES

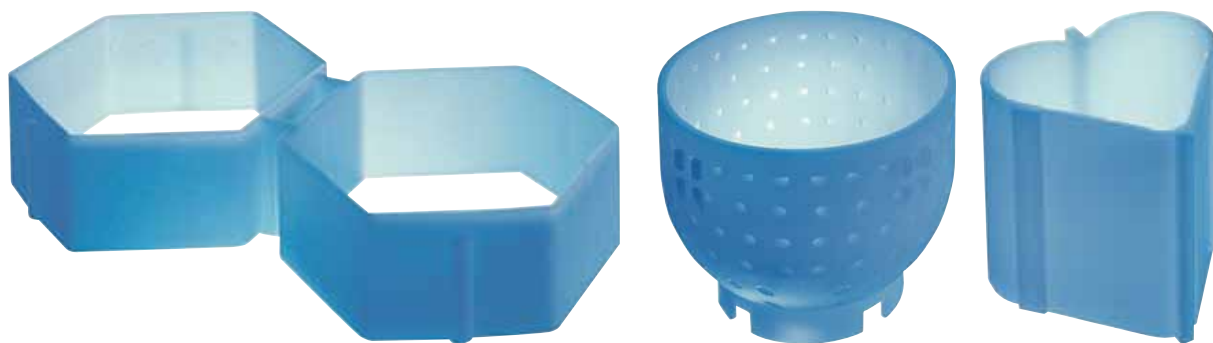
 Petal's 


Dimensions		Reference	Bottom	Perforation	Maximal depth		Maximal Height of Mould		Maximal Height of Extension		Single	Bande	1/2 block or block	Cliped	Welded	Standard Grouping	Use under conditions
mm	inch				mm	inch	mm	inch	mm	inch							
6 P Ø 68	6 P Ø 2 21/32	PM6P 68/1	x	R	60	2 11/32			25	31/32	x				x		x
6 P Ø 68	6 P Ø 2 21/32	PM6P 68/2	x	R	60	2 11/32			25	31/32	x				x		x
6 P Ø 69,8	6 P Ø 2 23/32	PM6P 69,8/1		xx				52	2 1/32	52	2 1/32	x		x			x
6 P Ø 95	6 P Ø 3 23/32	PM6P 95/1						100	3 29/32			x					x
6 P Ø 96,8	6 P Ø 3 25/32	PM6P 96,8/1	2x	R	75	2 15/16			40	1 9/16	x				x		x
6 P Ø 96,8	6 P Ø 3 25/32	PM6P 96,8/2	2x	R	75	2 15/16			40	1 9/16	x				x		x
6 P Ø 98,8	6 P Ø 3 7/8	PM6P 98,8/1		R				90	3 17/32			x			x		x
6 P Ø 143	6 P Ø 5 5/8	PM6P 143/1	x	R	108,5	4 1/4			30	1 5/32	x				x		x
4 P Ø 189,9	4 P Ø 7 15/32	PM4P 189,9/1	x	xx	47/5	1 27/32 3/16					x				x		x
4 P Ø 189,9	4 P Ø 7 15/32	PM4P 189,9/2	x	xx	47/5	1 27/32 3/16					x				x		x
6 P Ø 223	6 P Ø 8 3/4	PM6P 223/1	x	R	115	4 1/2					x				x		x
8 P Ø 232	8 P Ø 9 1/8	PM8P 232/1	x	R	115	4 1/2					x				x		x
6 P Ø 260	6 P Ø 10 7/32	PM6P 260/1	x	R	90	3 17/32					x				x		x
8 P Ø 269	8 P Ø 10 9/16	PM8P 269/1		R				97	3 13/16			x			x		x
8 P Ø 269	8 P Ø 10 9/16	PM8P 269/2	x	R	80/42	3 1/8 1 5/8					x				x		x
8 P Ø 269	8 P Ø 10 9/16	PM8P 269/3		R				97	3 13/16			x			x		x
8 P Ø 269	8 P Ø 10 9/16	PM8P 269/4	x	R	80/42	3 1/8 1 5/8					x				x		x

0* : Separated bottom

SOFT CHEESES

★ ◆ ▼ ▲ ○ ■ ● Specialty shapes & embossing



Dimensions		Reference	Bottom	Perforation	Maximal depth		Maximal Height of Mould		Maximal Height of Extension		Single	Bande	1/2 block or block	Cliped	Welded	Standard Grouping	Use under conditions
					mm	inch	mm	inch	mm	inch							
Heart	Heart	PMD /1	x	xx	85	3 11/32					x				x		
Heart	Heart	PMD /2					97	3 13/16			x				x		x
Little Heart	Little Heart	PMD /3		xxx			63	2 15/32	25	31/32	x				x		x
Bean 100 x 50	Bean 3 29/32 x 1 15/16	PMD /4					100	3 29/32			x				x		
Leaf 100 x 75	Leaf 3 29/32 x 2 15/16	PMD /5		xxx			50	1 15/16	50	1 15/16	x				x		x
94/R106	3 11/16 x R4 5/32	PMD /6	x	xx	0	0	37	1 7/16			x			x			x

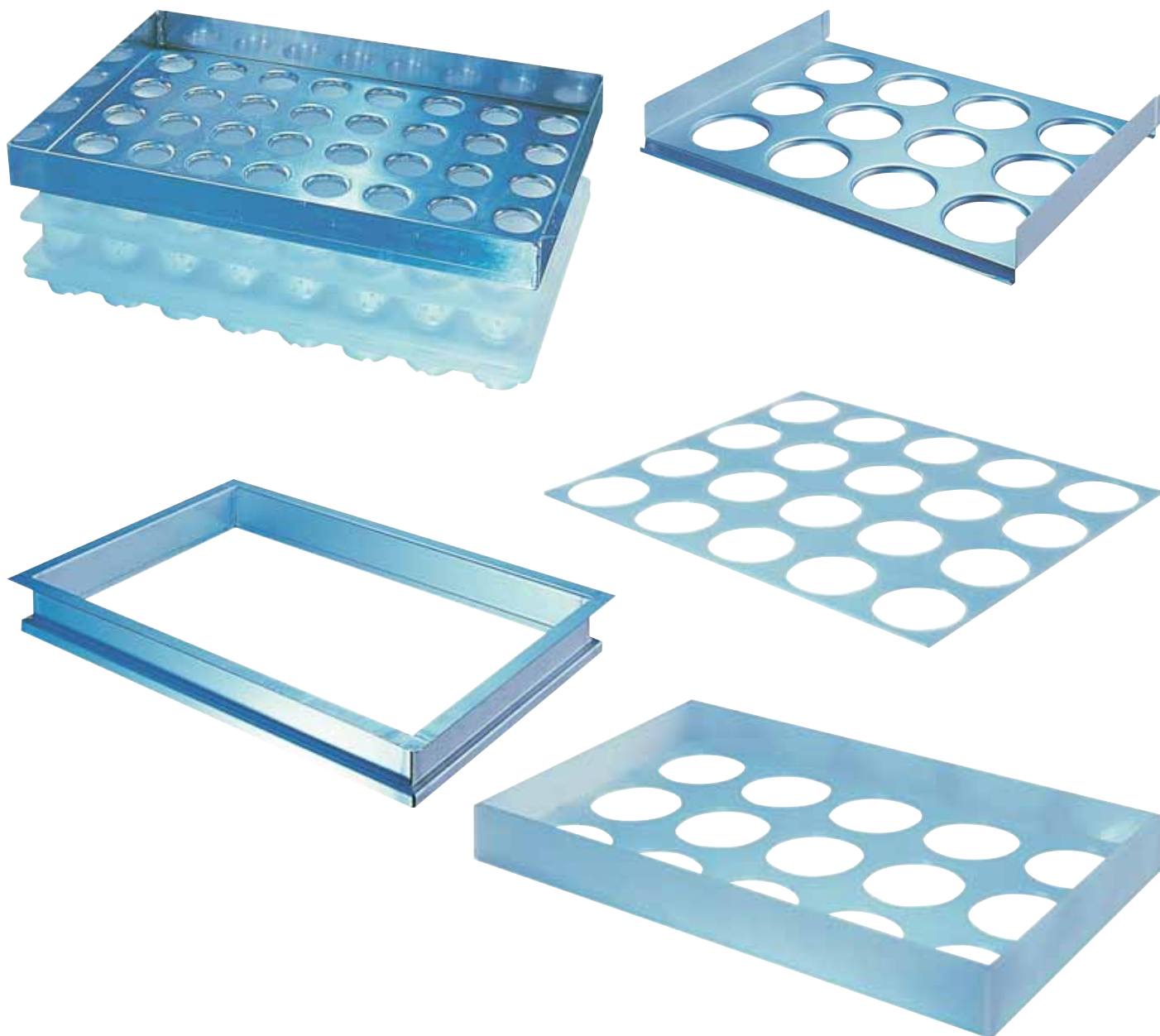
0* : seperated bottom

You have not found the model you are looking for, we certainly have a solution for you.

Feel free to contact us : Tel +33 (0)2 47 96 11 50 – Fax +33 (0)2 47 96 11 77

DISTRIBUTORS

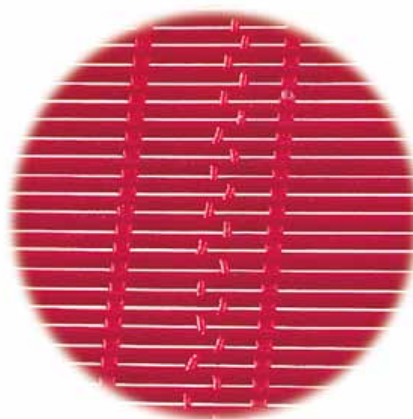
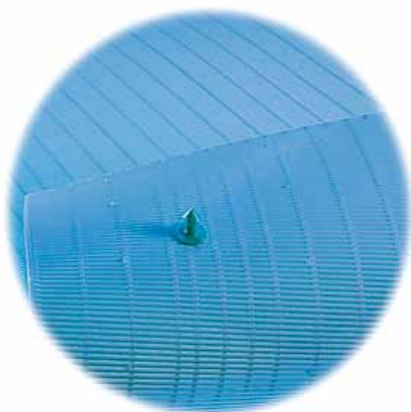
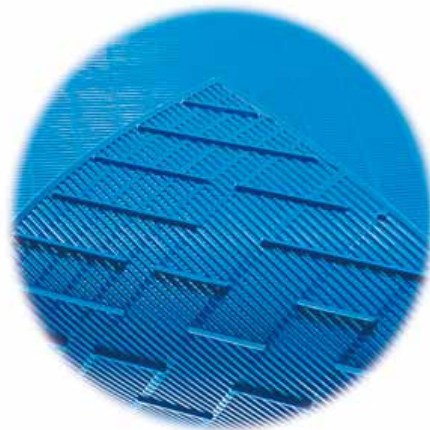
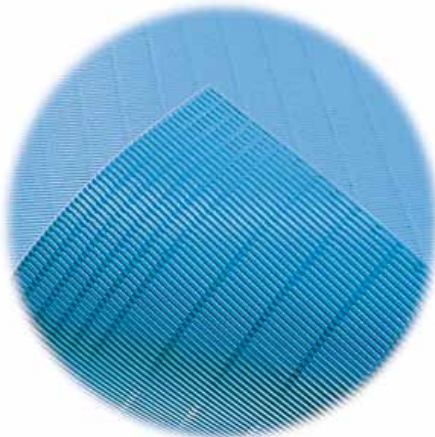
Soft cheeses & pressed cheeses



Our distributors, plates and molding are custom designed to your dimensions and adapted to your needs.

Product	Material
Distributor for 1, 2, 3, 4 ou 5 trays	Aluminium 1050 H24 (A5 1/2 dur) 5754 H111 (AG3H11)
curd distributor for continuous moulding	
moulding frame	Polypropylen -ABS-
Moulding plate without frame	Polypropylen

BAGUETTES DRAINING MATS



Colors available

* Default : Blue Servi

* Others : See page 5

Fastening systems

* Option 1 : By means of pion and washer

* Option 2 : By welding

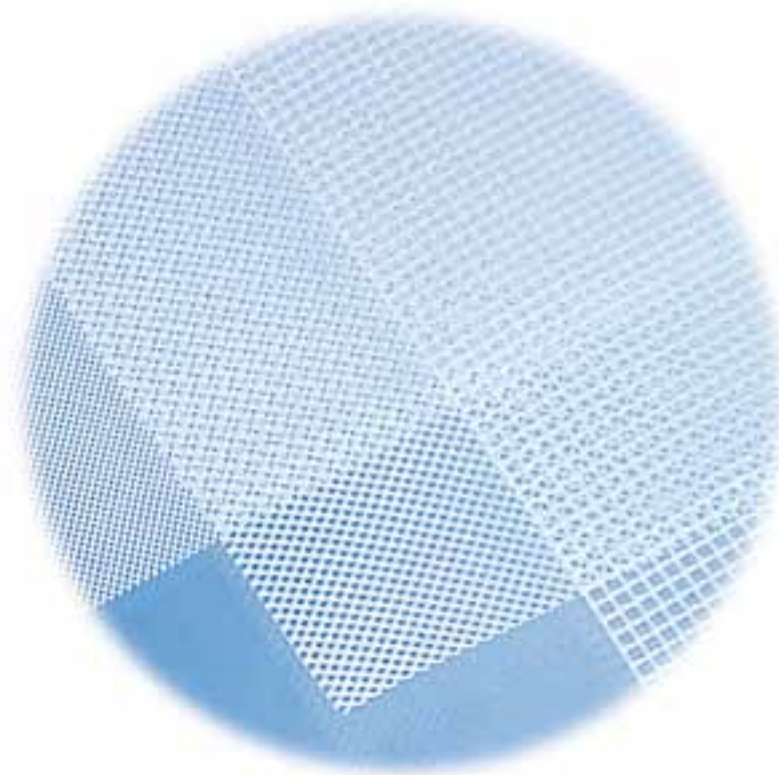
Panel dimensions injected		Reference	Type	Ø des ba-guettes		Espace entre ba-guettes		Use under conditions	
mm	Inch			mm	Inch	mm	Inch		
609 x 757	23 31/32 x 29 25/32	ST 2054	Reversible	2,6	3/32	0,3			
516 x 642	20 5/16 x 25 1/4	ST 5741	with feets	2,75	3/32	0,6			
610 x 900	24 x 35 13/32	ST 6720	with feets	2,6	3/32	0,3			
200 x 200	7 27/32 x 7 27/32	ST 17892	Straw imitation mat						
405 x 405	15 15/16 x 15 15/16	ST 20317E	Straw imitation mat						X

0* : seperated bottom

You have not found the model you are looking for, we certainly have a solution for you.

Feel free to contact us : Tel +33 (0)2 47 96 11 50 – Fax +33 (0)2 47 96 11 77

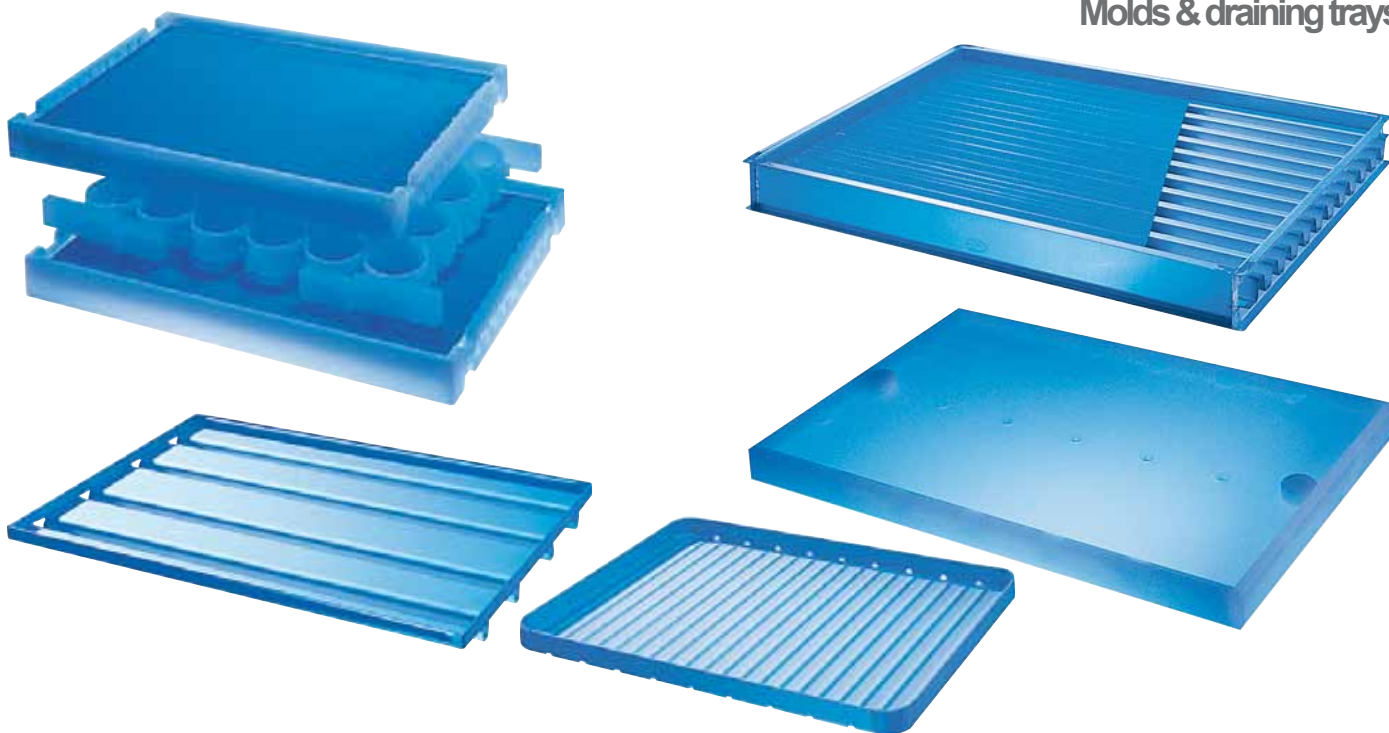
MESHED DRAINING MATS



Dimensions of a roll		Reference	Material	Color	Thickness		Mesh size	
m	Inch				mm	Inch	mm	Inch
0,50x25	19 21/32 x 98 13/32	STM 5015	PEHD	White	3,2	1/8	3x3,2	3/32 x 1/8
0,50x25	19 21/32 x 98 13/32	STM 5016	PEHD	White	1,6	1/16	2x1,8	1/16 x 1/16
0,50x25	19 21/32 x 98 13/32	STM 5017	PEHD	White	1,6	1/16	1,8x1,8	1/16 x 1/16
0,50x25	19 21/32 x 98 13/32	STM 5018	PEHD	White	1,3	1/32	3,4x3,2	1/8 x 1/8
0,50x25	19 21/32 x 98 13/32	STM 5205	PPS	Natural	1,7	1/16	2,8x2,8	3/32 x 3/32
1x20	39 11/32 x 78 23/32	STM 5208	PEHD	Natural	2,4	3/32	10x10	3/8 x 3/8
1x20	39 11/32 x 78 23/32	STM 5213	PEHD	Natural	3,5	1/8	18x18	11/16 x 11/16
1x20	39 11/32 x 78 23/32	STM 5216	PEHD	Natural	1,9	1/16	4x4	5/32 x 5/32
1x25	39 11/32 x 98 13/32	STM 5230	PPS	Natural	1,3	1/32	1,4x1,6	1/32 x 1/16
0,9x25	35 13/32 x 98 13/32	STM 5247	PEHD	White	4,3	5/32	5,5x6	3/16 x 7/32
0,69x25	27 5/32 x 98 13/32	STM 5377	PEHD	Natural	2,8	3/32	1x8	1/32 x 5/16

TRAYS

Molds & draining trays



Reference	Type of trays	Material	Maximum useful dimensions and standards				Other dimensions	Brevet SERVI DO- RYL	Use under conditions
			mm	Inch	mm	Inch			
PLX/1	With 2 up to 4 whey draining gutters	Stainless steel 304 or 306 and Aluminium	600	23 19/32	995	39 5/32			
PLX/2			600	23 19/32	1100	43 9/32			
PLX/3	With flat base and no welded bended sides	Stainless steel 304 or 306	510	20 1/16	630	24 25/32	yes		
PLX/4	With flat base and welded bended sides	Aluminium 1050 H24 ou 5754 H111	510	20 1/16	630	24 25/32	yes		
PLX/5	Double face	Stainless steel 304 to 316	550	21 5/8	1000	39 11/32			
PLX/6	Separated double face tray	Polypropylen	Depending on moulds grouping						
PLX/7	Double face tray	Polypropylen	Depending on moulds grouping					patented anti-drop system	
PLX/8	Double face tray	Polypropylen	469	18 7/16	718,5	28 9/32	yes	patented anti-drop system	
PLX/9			469	18 7/16	958	37 11/16			
PLX/10	Double face multimoulds draining tray with sloping gutters	Polypropylen	500	19 21/32	622	24 15/32	On request	patented whey draining and cheese ventilation system	
PLX/11			500	19 21/32	652	25 21/32			

0* : seperated bottom

You have not found the model you are looking for, we certainly have a solution for you.

Feel free to contact us : Tel +33 (0)2 47 96 11 50 – Fax +33 (0)2 47 96 11 77

COAGULATION VATS

Semi cylindrical vats in polyethylene

Useful / total capacity		Reference
L	IG	
80/100	17,6/22	BC 80
100/117	22/26	BC100
120/145	26,4/31,9	BC 120
150/196	33/43	BC 150
170/200	37,4/44	BC 170
185/200	41/49	BC 185
220/252	48/	BC 220
250/304	55/67	BC 250
520/562	114,4/123,6	BC 520
548/600	120,6/132	BC 548



Semi elliptical vats in polyethylene

Useful / total capacity		Reference
L	IG	
500/591	110/130	BE 500
550/663	121/146	BE 550
670/780	174,4/171,6	BE 670



COAGULATION VATS

Parallelepipedic vats in polyethylene

Useful / total capacity		Reference
L	IG	
11/13	2/3	BFP 11
20/27	4/6	BFP 20
43/58	9/13	BFP 43
50/55	11/12	BFP 50
70/80	15/18	BFP 70
125/138	28/30	BFP 125
130/150	29/33	BFP 130
150/170	33/37	BFP 150
155/188	34/41	BFP 155
200/222	44/49	BFP 200
240/270	53/30	BFP 240



0* : seperated bottom

COAGULATION VATS

Semi spherical vats in polyethylene

Useful / total capacity		Reference	Options
L	IG		
125/138	27,5/30,4	BAS 125T	<ul style="list-style-type: none"> - Lid - Trolley / Cart - Support frame in stainless steel - With wheels



IDENTIFICATION

Identification plates



Reference	Specifications	Material	Colors	Dimensions			
				mm		Inch	
ARD/1	Cheese tracking during aging	Injected parts in food grade polypropylen	Blue SERVI	160	120	6 9/32	4 23/32
ARD/2			Soft blue				
ARD/3			Pastel green				
ARD/4	Better visual tracking by means of different colours		Green meadow				
ARD/5	Writing by use of permanent maker (washing by use of alcohol to allow a rewriting at will)		Light yellow				
ARD/6			Orange				
ARD/7	To be hung on maturing racks and others supports		Pink				
ARD/8			White				
ARD/9			Red				

0* : seperated bottom

You have not found the model you are looking for, we certainly have a solution for you.

Feel free to contact us : Tel +33 (0)2 47 96 11 50 – Fax +33 (0)2 47 96 11 77

SUPPORTS & MANUTENTION

Racks and bases for stacks, trolley/cart



Reference	Denomination	Construction	Technical Specifications	Dimensions				Remarks	Use under certain conditions
				mm	Inch	mm	Inch		
PDB	Base for stack	Stainless steel 304 ou 316 L	For plastic feets	Adaptées aux claies ou aux plateaux				160 mm useful height for forks entries	For plastic feets
CLAIES	Aging racks	Stainless steel 304 ou 316 L	25,31 or 51 fils	510	20 1/16	630	24 25/32	Trade products	
CHARIOT	Trolley /cart	Stainless steel 304 ou 316 L	One or two stacks	Adapted to your block-moulds and racks dimensions					

PRESSED CHEESES

Microperforated molds and block-molds with injected technology

These easy to clean polypropylene molds and block-molds will allow you to manufacture cooked and uncooked pressed cheeses and are particularly adapted to certain spherical and complex forms.

Microperforated molds and block-molds « boiler » technology

Molds specially developed for the production of long and natural mature cheeses. These polypropylene molds or block-molds are particularly adaptable to any mechanization systems, and can also be use in a traditional way.

Servi Doryl offers a wide range of patterns to facilitate the development of different types of rinds (see table below). To compliment the process; acidification forms and block-forms are also available for integration into either mechanized or traditional cheese making methods. Special requests can be studied individually on request.

Pattern T4C



				Shape of draining micro-holes		
Pattern reference		Diamond shape pattern	Square pattern	Textured pattern	Conical	Cylindrical
T1	Very fine	x			x	x
T1,5	Fine	x	x		x	x
T2	Medium	x	x		x	x
T3	Deep	x			x	
T4C				x	x	

PRESSED CHEESES

Rounds boiler made / hand made ★ ◆ ▼ ▲ ○ ■ ●

80 to 396 mm | 3 1/8 to 15 9/16 Inch



Dimensions		Reference	Radius option		Maximum depth	
mm	Inch		mm	Inch	mm	Inch
80	3 1/8	MPC 80	-	-	120	4 23/32
90	3 17/32	MPC 90	-	-	120	4 23/32
100	3 29/32	MPC 100	-	-	120	4 23/32
110	4 5/16	MPC 110	-	-	120	4 23/32
120	4 23/32	MPC 120	-	-	120	4 23/32
130	5 3/32	MPC 130	12	15/32	120	4 23/32
134	5 1/4	MPC 134	-	-	120	4 23/32
140	5 1/2	MPC 140	10	5 1/2	120	4 23/32
150	5 7/8	MPC 150	20	25/32	180	7 1/16
158	6 7/32	MPC 158	-	-	180	7 1/16
175	6 7/8	MPC 175	30	1 5/32	180	7 1/16
180	7 1/16	MPC 180	15	9/16	180	7 1/16
190	7 15/32	MPC 90	-	-	180	7 1/16
200	7 27/32	MPC 200	-	-	200	7 27/32
205	8 1/16	MPC 205	-	-	200	7 27/32
210	8 1/4	MPC 210	10	5 1/2	200	7 27/32
220	8 21/32	MPC 220	20	25/32	200	7 27/32
230	9 1/32	MPC 230	-	-	200	7 27/32
240	9 7/16	MPC 240	5	3/16	200	7 27/32

Dimensions		Reference	Radius option		Maximum depth	
mm	Inch		mm	Inch	mm	Inch
248	9 3/4	MPC 248	-	-	200	7 27/32
255	10 1/32	MPC 255	30	1 5/32	240	9 7/16
273	10 23/32	MPC 273	30	1 5/32	240	9 7/16
280	11	MPC 280	-	-	240	9 7/16
290	11 13/32	MPC 290	-	-	240	9 7/16
300	11 25/32	MPC 300	-	-	240	9 7/16
310	12 3/16	MPC 310	-	-	240	9 7/16
320	12 19/32	MPC 320	-	-	240	9 7/16
327	12 27/32	MPC 327	-	-	240	9 7/16
336,5	13 7/32	MPC 336,5	-	-	240	9 7/16
340	13 3/8	MPC 340	-	-	240	9 7/16
345	13 9/16	MPC 345	-	-	240	9 7/16
350	13 3/4	MPC 350	-	-	240	9 7/16
358	14 3/32	MPC 358	30	1 5/32	240	9 7/16
370	14 9/16	MPC 370	-	-	240	9 7/16
375	14 3/4	MPC 375	-	-	240	9 7/16
380	14 15/16	MPC 380	-	-	240	9 7/16
390	15 11/32	MPC 390	40	1 9/16	240	9 7/16
396	15 9/16	MPC 396	-	-	240	9 7/16

PRESSED CHEESES

● ■ □ ○ ▲ ▼ ◆ ★ Rounds custom manufactured moulds and lids

400 to 815 mm | 15 23/32 to 32 1/6 Inch



Dimensions		Reference	Radius option		Maximum depth	
mm	Inch		mm	Inch	mm	Inch
400	15 23/32	MPC 400	12	15/32	400	15 23/32
450	17 11/16	MPC 450	-	-	290	11 13/32
550	21 5/8	MPC 550	-	-	290	11 13/32
600	23 19/32	MPC 600	-	-	290	11 13/32
642	25 1/4	MPC 642	-	-	290	11 13/32
650	25 9/16	MPC 650	-	-	290	11 13/32
680	26 3/4	MPC 680	-	-	290	11 13/32
742	29 3/16	MPC 742	-	-	290	11 13/32
765	30 3/32	MPC 765	-	-	290	11 13/32
780	30 11/16	MPC 780	-	-	290	11 13/32
790	31 3/32	MPC 790	-	-	290	11 13/32
800	31 15/32	MPC 800	-	-	290	11 13/32
815	32 1/16	MPC 815	-	-	290	11 13/32



0* : seperated bottom

You have not found the model you are looking for, we certainly have a solution for you.
 Feel free to contact us : Tel +33 (0)2 47 96 11 50 – Fax +33 (0)2 47 96 11 77

PRESSED CHEESES

Squares custom manufactured moulds and lids

250 à 900 mm | 9 13/16 to 35 13/32 Inch



Dimensions		Reference	Maximum depth	
mm	Inch		mm	Inch
250	9 13/16	MPCC 250	240	9 7/16
290	11 13/32	MPCC 290	240	9 7/16
300	11 25/32	MPCC 300	240	9 7/16
320	12 19/32	MPCC 320	240	9 7/16
330	12 31/32	MPCC 330	240	9 7/16
340	13 3/8	MPCC 340	240	9 7/16
350	13 3/4	MPCC 350	240	9 7/16
355	13 31/32	MPCC 355	240	9 7/16
560	22 1/32	MPCC 560	290	11 13/32
690	27 5/32	MPCC 690	290	11 13/32
750	29 1/2	MPCC 750	290	11 13/32
780	30 11/16	MPCC 780	290	11 13/32
900	35 13/32	MPCC 900	290	11 13/32



PRESSED CHEESES

★ ◊ ▼ ▲ ● ■ ◻ ● Rectangulars boiler made / hand made
 220x110 à 790x660 mm | 8 21/32x4 5/16 to 31 3/32x25 31/32 Inch



Length en mm		Width en mm		Reference	Maximum depth	
mm	Inch	mm	Inch		mm	Inch
220	8 21/32	110	4 5/16	MPCR 220x110	240	9 7/16
240	9 7/16	110	4 5/16	MPCR 240x110	240	9 7/16
250	9 13/16	120	4 23/32	MPCR 250x120	240	9 7/16
270	10 5/8	170	6 11/16	MPCR 270x170	240	9 7/16
285	11 7/32	100	3 29/32	MPCR 285x100	240	9 7/16
300	11 25/32	100	3 29/32	MPCR 300x100	240	9 7/16
300	11 25/32	110	4 5/16	MPCR 300x110	240	9 7/16
300	11 25/32	120	4 23/32	MPCR 300x120	240	9 7/16
300	11 25/32	150	5 4/8	MPCR 300x150	240	9 7/16
300	11 25/32	250	9 13/26	MPCR 300x250	240	9 7/16
300	11 25/32	280	11	MPCR 300x280	240	9 7/16
305	12	105	4 1/8	MPCR 305x105	240	9 7/16
350	13 3/4	280	11	MPCR 350x280	240	9 7/16
355	13 31/32	280	11	MPCR 355x280	240	9 7/16
360	14 5/32	240	9 7/16	MPCR 360x240	240	9 7/16

Length en mm		Width en mm		Reference	Maximum depth	
mm	Inch	mm	Inch		mm	Inch
360	14 5/32	270	10 5/8	MPCR 360x270	240	9 7/16
360	14 5/32	290	11 13/32	MPCR 360x290	240	9 7/16
360	14 5/32	300	11 25/32	MPCR 360x300	240	9 7/16
380	14 15/16	280	11	MPCR 380x280	240	9 7/16
393	15 15/32	300	11 25/32	MPCR 393x300	240	9 7/16
400	15 23/32	300	11 25/32	MPCR 400x300	240	9 7/16
420	16 17/32	100	3 29/32	MPCR 420x100	240	9 7/16
430	16 29/32	300	11 25/32	MPCR 430x300	240	9 7/16
450	17 11/16	150	5 7/8	MPCR 450x150	240	9 7/16
450	17 11/16	300	11 25/32	MPCR 450x300	240	9 7/16
480	18 7/8	295	11 19/32	MPCR 480x295	240	9 7/16
500	19 21/32	135	5 5/16	MPCR 500x135	240	9 7/16
500	19 21/32	300	11 25/32	MPCR 500x300	240	9 7/16
540	21 1/4	270	10 5/8	MPCR 540x270	240	9 7/16
765	30 3/32	640	35 3/16	MPCR 765x640	290	11 13/32
790	31 3/32	660	25 31/32	MPCR 790x660	290	11 13/32

0* : seperated bottom

You have not found the model you are looking for, we certainly have a solution for you.
 Feel free to contact us : Tel +33 (0)2 47 96 11 50 – Fax +33 (0)2 47 96 11 77

PRESSED CHEESES

Rounds injected ★ ◆ ▼ ▲ ○ ■ ■ ●
 90 à 255 mm



Dimensions		Reference	Total depth		Useful micro-perforated depth		Depth of micro-perforation and pattern		Total height		Pressing lid Total height /useful	Radius on mould bottom
mm	Inch		mm	Inch	mm	Inch	mm	Inch	mm	Inch		
90	3 17/32	MPI 90/1	85	3 11/32	70	2 3/4	55	2 5/32	93	3 21/32	Total height 65/useful 60	5
100	3 29/32	MPI 100/1	97	3 13/16	87	3 13/32	75	2 15/16	105	4 1/8	Total height 65/useful 60	5
110	4 5/16	MPI 110/1	100	3 29/32	80	3 1/8	64,5	2 17/32	107	4 3/16	Total height 80/useful 74	5
125	4 29/32	MPI 125/1	170	6 11/16	135	5 5/16	105	4 1/8	180	7 1/16	Total height 110/useful 100	Ball
130	5 3/32	MPI 130/1	118	4 5/8	99	9 4/8	79	3 3/32	125	4 29/32	Total height 65/useful 55	5
140	5 1/2	MPI 140/1	100	3 29/32	90	3 17/32	80	3 1/8	107	4 3/16	Total height 57/useful 46	5
150	5 7/8	MPI 150/1	200	7 27/32	160	6 9/32	177	6 15/16	208	8 3/16	Total height 152	Ball
180	7 1/16	MPI 180/1	150	5 7/8	135	5 5/16	90	3 17/32	156	6 1/8	Total height 135/useful 115	5
200	7 27/32	MPI 200/1	186	7 5/16	150	5 7/8	170	6 11/16	205	8 1/16	Total height 137/useful 107	30
210	8 1/4	MPI 210/1	138	5 13/32	110	4 5/16	110	4 5/16	146	5 23/32	Total height 61,5/useful 53	1
240	9 7/16	MPI 240/1	105	4 1/8	83	3 1/4	63	2 15/32	112	4 13/32	Total height 72/useful 65	5
252,5	9 15/16	MPI 252,5/1	172	6 3/4	122	4 25/32	122	4 25/32	191	7 1/2	Useful height 122	30

0* : Separated bottom

PRESSED CHEESES

●■●▲▼◇★ Rectangulares injected



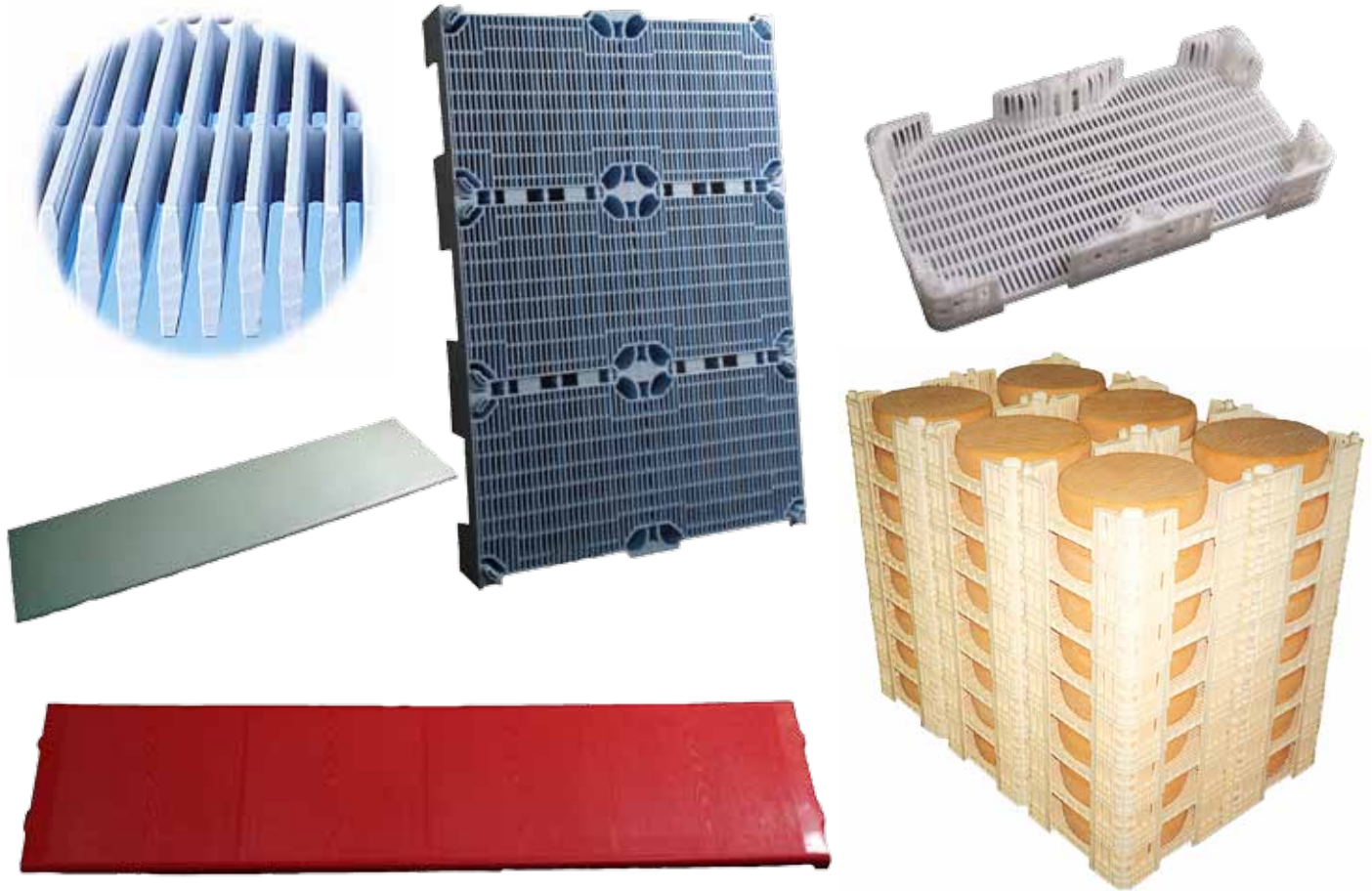
Length in mm		Width in mm		Reference	Total depth		Useful microperforated depth		Depth of microperforation and pattern		Total height		Total height of pressing lid /useful	Radius on mould bottom	
mm	Inch	mm	Inch		mm	Inch	mm	Inch	mm	Inch	mm	Inch		mm	Inch
250	9 13/16	120	4 23/32	MPIR 250x120/1	140	5 1/2	110	4 5/16	100	3 29/32	148	5 13/16	Total height 113/useful 68	3	3/32

0* : seperated bottom

You have not found the model you are looking for, we certainly have a solution for you.
 Feel free to contact us : Tel +33 (0)2 47 96 11 50 – Fax +33 (0)2 47 96 11 77

AGING

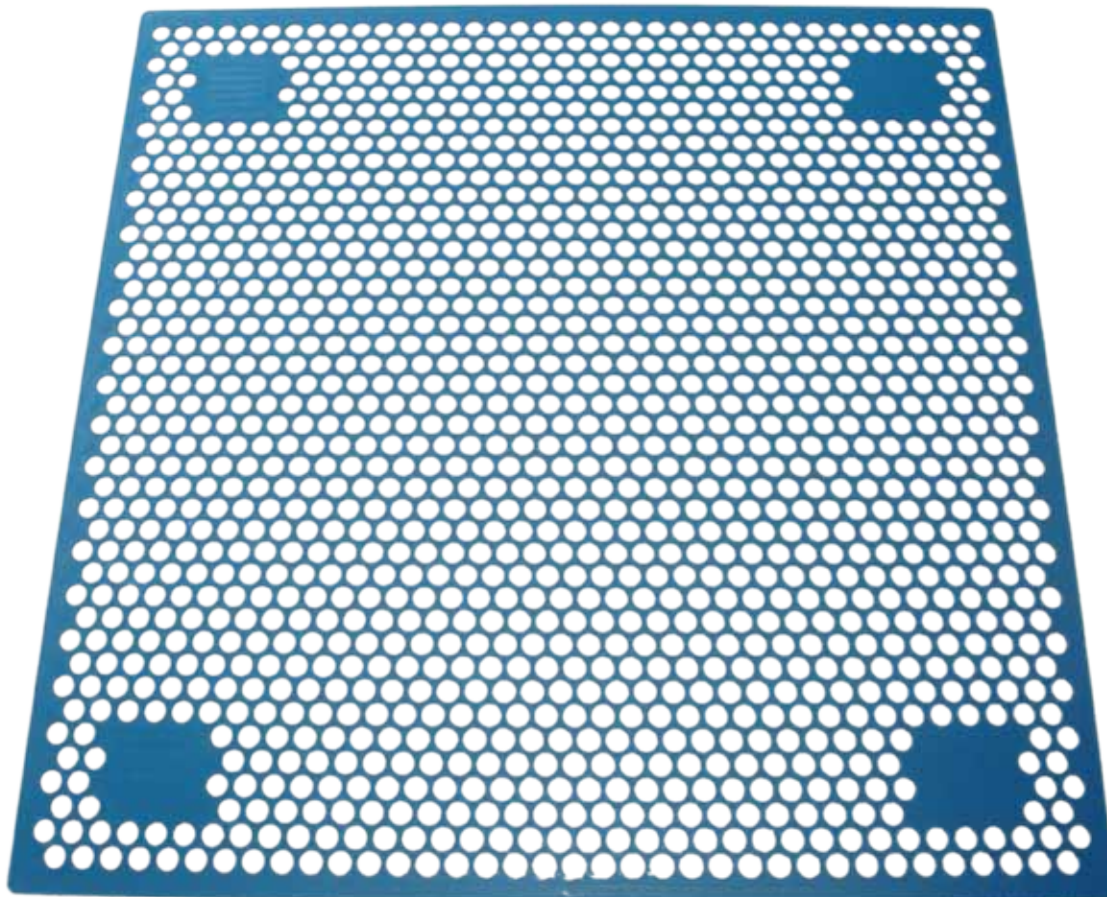
Aging racks, baskets and pallets



Denomination	Material	Specifications	Dimensions in mm			Remarks	Reference	Use under conditions
SANAIR aging rack	Polypropylen	Weight 4,7 Kg	1100	350	25		AFF/1	
Aging rack	Polypropylène stainless steel	Wood imitation design Weight 4,9 Kg	1307	335	35		AFF/2	
Aging / maturing baskets with open sidewall	Polypropylen	Useful height : 100 mm Stacking height : 125 mm Weight 3,5 Kg	800	400	140	Max dimensions of cheeses : round 396 mm , square : 280x280 mm	SANAIR/1	
Aging / maturing baskets with closed sidewall							SANAIR/2	
Aging rack ARL	Polypropylen	Useful height : 155 mm Stacking height : 185 mm Weight 9 Kg	1260	660	200	Inside useful dimensions: 1200x600 mm	ARL/1	x
SANAIR plastic pallet	Polypropylen	Stacking height : 153 mm	800	400	168	Height of forks entries 105 mm	PAL/1	
			800	800			PAL/2	
			1200	800			PAL/3	

STERILISATION PLATE

Spacers



Specifications	Material	Colors	Dimensions		Diameter of holes		Areas without holes	Wheight		Reference
			mm	Inch	mm	Inch		Kg	-	
For motionless sterilization system or any use as spacers for products to be stacked <i>(easy to clean)</i>	Injection plastic parts in food grade polypropylen	- Blue - White <i>other colors available on request (see page 5)</i>	990 x 990 Thickness : 3,5	38 31/32 x 38 31/32 Thickness :	20	25/32	4 designated areas for handling by means of robot or prehensor	1,42	-	Stérilisation/1

0* : seperated bottom

You have not found the model you are looking for, we certainly have a solution for you.

Feel free to contact us : Tel +33 (0)2 47 96 11 50 – Fax +33 (0)2 47 96 11 77



**A L G E R I A
A R G E N T I N A
A U S T R A L I A
A U S T R I A
B E L A R U S
B R A Z I L
C H I L E
C O S T A R I C A
D A N M A R K
F R A N C E
G E R M A N Y
H U N G A R Y
I R L A N D
I T A L Y
N O R W A Y
P E R U
P O L A N D
P O R T U G A L
R U S S I A
S P A I N
S W E D E N
S W I T Z E R L A N D
U . K .
U K R A I N E
U . S . A .
V E N E Z U E L A**

ZI Sud - Rue Lavoisier - BP 57 - 37130 L'Arçay FRANCE
Tel +33 (0)2 47 96 11 50 - Fax: +33 (0)2 47 96 11 77
contact@servidoryl.com

www.servidoryl.com